

example of a field blend wine, with the original vineyard planted in the late 1800s. Beeson Ranch features the usual suspects of Zinfandel, Petite Sirah, Carignane, Grenache and Alicante Bouschet, interspersed with some unique vines of Pinot St. George (also known as Négrette) and a white varietal called Trousseau Gris. This incredible vineyard is truly a labor of love and stands as a testament to the character and history that makes Dry Creek Valley a special place to grow grapes.



Vogensen Ranch

Rising more than 800 feet off the valley floor, Vogensen Ranch is owned by our vineyard manager, Matt Vogensen and his family, and has been a source of grapes for both our Heritage Vines and Old Vine Zinfandel bottlings for years. Now part of our single vineyard lineup, our Vogensen Ranch Zinfandel is focused on a steeply sloped, well draining area of the vineyard called "Barn Block". The undulating nature of the terrain and east facing sun exposure provide us with grapes that are beautifully ripened and lead to a wine that is silky, textured and well balanced.

Somers Ranch is located at the eastern edge of the Dry Creek Valley, near our Endeavour Vineyard. Most of the ranch has eastern facing hillside vineyards which allow for optimum sun exposure. The grapes for this wine come from two adjacent parcels that overlook the ranch. This was one of the first vineyards in the Dry Creek Valley to be planted using Heritage Vines budwood. Now over 20 years old, these vines produce rich, flavorful grapes that are balanced and juicy.

Each Zinfandel that we produce has its own particular story to tell. Which is your favorite? Join our exclusive wine club group on facebook at www.facebook.com/groups/dcvwineclub and let us know!



FAMILY WINEMAKING
SINCE 1972



WINE CLUB
NEWSLETTER
February 2018



Greetings!

There is something about a cold winter's day that makes me dream about vacation, so I am thrilled to announce we have settled on our next wine cruise destination! We will be traveling along the Rhine River through the Netherlands, Germany, France and Switzerland, tasting our way through Europe's famed Riesling-producing regions. We will also start this dream vacation off with a pre-trip excursion in the beautiful city of Amsterdam, right in the middle of their famed tulip season!

I am particularly looking forward to this trip because our river cruise will take us near the town where my family lived from 1967-1969, before returning to the United States to later start our family winery in 1972. I hope that you will consider joining Don and me for this delicious and picturesque journey.

Wine country is starting to show signs of spring, and if you haven't been to the winery lately, I invite you to come and visit. Our tasting room team is ready to greet you with their smiles and some incredible new winery-exclusive wines. As always, please feel free to write to me at wineclub@drycreekvineyard.com to share your comments or your favorite moments with our wines.

My best,

KIM STARE WALLACE
President



ZINFANDEL VINEYARDS SPOTLIGHT

Here at Dry Creek Vineyard, Zinfandel is part of our DNA. With over 45 years of experience farming in the Dry Creek Valley, we have found the best vineyard sites to craft single vineyard bottlings. Some people may say that all Zinfandels taste the same, but we dare to disagree! Each site has its own unique soils, topography and history, creating distinctive flavors and nuances to enjoy and explore.

Our DCV7 - Wallace Ranch is a case study in the preservation of iconic Old Vine Zinfandel. This incredible 12-acre vineyard is adjacent to the winery, on the property of owners Kim and Don Wallace, and was the first to be planted using the "Heritage Vines" budwood concept in 1994. To begin, we isolated virus-free budwood from a pre-Prohibition era property that was planted in 1906. We then grafted the budwood onto rootstock planted in our estate DCV7 vineyard, forever preserving the "heritage" of the old vines. The resulting wine honors the aromatics and flavor profile of Old Vine Zinfandel with Asian spices, black tea and white pepper nuances.

The 4.5 acre DCV2 - Four Clones Vineyard is also located on our winery property and was originally planted in 1972. In 2002, the existing vines were torn out and the ground was left fallow for seven years to regenerate naturally, without the use of harsh chemicals. Planted again in 2009, this traditional, head-pruned, old world-style Zinfandel vineyard incorporates four distinct clones - Bradford Mountain, St. Peter's Church, Primitivo and Dupratt on St. George rootstock. Four Clones Vineyard is a throwback to a bygone era of grape growing, and the grapes from this old vine-inspired parcel produce a wine that is full-bodied and complex, yet impeccably balanced.

Spencer's Hill Zinfandel is grown in two small parcels in our iconic estate Endeavour Vineyard in the Lytton Springs District of Dry Creek Valley. The small clusters and low yields from this part of the vineyard provide us with fruit that is rich, ripe and full of expressive blackberry Zinfandel flavors. Named after winery founder David S. Stare's grandson, Spencer, this outstanding wine is as precocious as its namesake and expresses Dry Creek Valley *terroir* at its finest.

Planted in 1882, Beeson Ranch is one of Dry Creek Valley's oldest and most prized vineyards. Located along West Dry Creek Road, Beeson Ranch faces east and extends up several gentle hillsides to a forest of conifer trees. The old gnarled vines, first planted by Italian immigrants, provide us with some of our most intriguing Zinfandel grapes. Our Beeson Ranch Zinfandel is the perfect



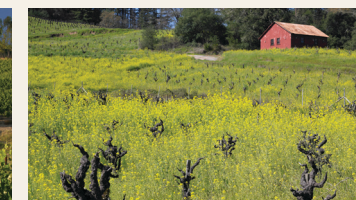
DCV7 - Wallace Ranch



DCV2 - Four Clones Vineyard



DCV9 - Endeavour Vineyard



Beeson Ranch

WINE LIST

SIGNATURE WINES	Retail Bottle	CLUB MEMBER PRICING	
		20% Savings Bottle	25% Savings Case
2016 Dry Chenin Blanc - Clarksburg	\$15.00	\$12.00	\$135.00
2016 Fumé Blanc - Sonoma County	\$15.00	\$12.00	\$135.00
2017 Sauvignon Blanc - Dry Creek Valley	\$20.00	\$16.00	\$180.00
2016 Heritage Vines Zinfandel - Sonoma County	\$24.00	\$19.20	\$216.00
2013 Meritage - Dry Creek Valley	\$30.00	\$24.00	\$270.00
2014 Merlot - Dry Creek Valley	\$26.00	\$20.80	\$234.00
2015 Cabernet Sauvignon - Dry Creek Valley	\$28.00	\$22.40	\$252.00
2015 Old Vine Zinfandel - Dry Creek Valley	\$35.00	\$28.00	\$315.00
2013 The Mariner - Dry Creek Valley	\$45.00	\$36.00	\$405.00
LIMITED RELEASE WINES			
2015 DCV3 Estate Sauvignon Blanc - Dry Creek Valley	\$28.00	\$22.40	\$252.00
2016 Taylor's Vineyard Sauvignon Blanc - Musqué Clone - Dry Creek Valley	\$28.00	\$22.40	\$252.00
2016 DCV Estate Block 10 Chardonnay - Russian River Valley	\$32.00	\$25.60	\$288.00
2015 Estate Petite Sirah - Spencer's Hill Vineyard - Dry Creek Valley	\$36.00	\$28.80	\$324.00
2015 Malbec - Dry Creek Valley	\$40.00	\$32.00	\$360.00
2014 Somers Ranch Zinfandel - Dry Creek Valley	\$42.00	\$33.60	\$378.00
2015 Beeson Ranch Zinfandel - Dry Creek Valley	\$45.00	\$36.00	\$405.00
2015 DCV7 Estate Zinfandel - Wallace Ranch - Dry Creek Valley	\$40.00	\$32.00	\$360.00
2015 Vogensen Ranch Zinfandel - Dry Creek Valley	\$40.00	\$32.00	\$360.00
2015 DCV2 Estate Zinfandel - Four Clones Vineyard - Dry Creek Valley	\$42.00	\$33.60	\$378.00
2014 DCV9 Estate Petit Verdot - Dry Creek Valley	\$40.00	\$32.00	\$360.00
2014 Cabernet Sauvignon - Wolcott Vineyard - Dry Creek Valley	\$50.00	\$40.00	\$450.00
2014 45 th Anniversary Cabernet Sauvignon - Dry Creek Valley	\$60.00	\$48.00	\$540.00
2014 Endeavour Cabernet Sauvignon - Dry Creek Valley	\$75.00	\$60.00	\$675.00

P.O. Box T • 3770 Lambert Bridge Road
Healdsburg, CA 95448
Tel. 707-433-1000 • 800-864-9463

www.drycreekvineyard.com
Wine Club Administrator: Salina Littleton ext. 123
wineclub@drycreekvineyard.com

Content: 100% Recycled,
50% Post-Consumer Waste,
Processed Chlorine Free

HOLIDAY WINEMAKER DINNER

Saturday, December 8, 2018

Wine Club Exclusive

\$175 per person - 2 tickets per membership

Each December we host our annual Holiday Winemaker Dinner, and this year was no exception! We transformed our cellar into an elegant dining room with twinkling lights, gorgeous centerpieces and a beautiful stage for renowned jazz singer, Shea Breaux Wells, and her incredible band. Kim Stare Wallace and Winemaker Tim Bell led us through a delicious four-course dinner paired with exclusive Dry Creek Vineyard wines, including the sold-out Late Harvest Sauvignon Blanc "Soleil".

We have already begun taking reservations for this year's dinner on Saturday, December 8, 2018, and we hope you will join us.



MERITAGE BLENDING EXPERIENCE

Together we will explore the fine art of Meritage blending. With your host and the tools of the trade, you will learn the history of the classic Bordeaux-style blend, tasting and measuring the five noble red grape varietals, ultimately creating your own perfect blend. Experience a day in the life of a winemaker as you fill, cork and label your custom bottle to take home.

\$90 per person | \$75 per club member
Wednesday - Sunday at 11 am
By Appointment Only

conciierge@drycreekvineyard.com
800-864-9463 x103



2018
EVENT
CALENDAR

FEBRUARY 10
Barrel Tasting*

APRIL 7
Endeavour Vineyard Hike*

APRIL 28 - 29
Passport to Dry Creek Valley

MAY 19
French Garden Party*

JUNE 16
Summer Zinfandel Dinner*

JUNE 23
Summer of Zin

JULY 21
Summer Vineyard Dinner*

SEPTEMBER 8
Sailing Adventure*

SEPTEMBER 15
Harvest Dinner*

SEPTEMBER 22
Harvest Experience*

NOVEMBER 24
Holiday Celebration*

DECEMBER 8
Holiday Winemaker Dinner*

*Wine Club Exclusive

FRENCH GARDEN PARTY

May 19, 2018

Complimentary for Club Members

\$25 per person for up to 2 guests | 21 and older only

Revel in the sights, sounds and *joie de vivre* of our French Garden Party! Join us for an afternoon of Loire-inspired wines while you relax in the comfort of our gardens with music, food pairings, local artists and more!

To limit crowding and enhance your personal experience, we will be offering two sessions of this popular event: 12:00-2:00 pm and 2:00-4:00 pm.

To RSVP, please contact Salina Littleton at wineclub@drycreekvineyard.com, or call (800) 864-9463 x123.



Join Dry Creek Vineyard second generation owners Kim Stare Wallace and Don Wallace on an enchanting 7-night journey along the Rhine River to magnificent cities and charming villages alike! We will cruise through the Netherlands, Germany, France and Switzerland wining, dining and sightseeing all along the way. There is no better way to experience this journey than by combining the ease of moving through the region on an AmaWaterways river cruise along the exquisite culinary experience onboard, creating a unique and exclusive experience!

For more information, contact Expedia
Cruise Ship Centers at
877-651-7447 or
WineClub@CruiseShipCenters.com
to reserve your space today!



CRUISE THE ENCHANTING RHINE

April 29 – May 6, 2019

Amsterdam • Cologne • Rudesheim
Mannheim • Strasbourg • Breisach • Basel

OUR LATEST ACCOLADES

sonoma
magazine

Top 100 Wines
of 2017

2016
FUMÉ BLANC
SONOMA COUNTY

2016
SAUVIGNON BLANC
DRY CREEK VALLEY

2014
CABERNET SAUVIGNON
DRY CREEK VALLEY

